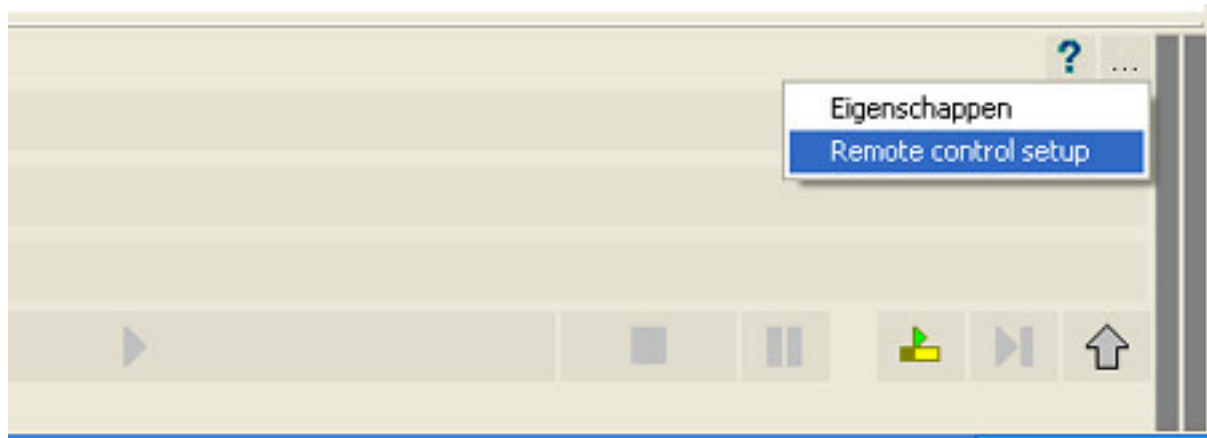


Eela CAPS2 faderstart



You can use the parallel LPT printer port van of your computer as a faderstart / remote pfl function:

Faderstart operates with a standard faderstart connection of your mixing desk. Make sure your faderstart function of your mixing desk is set to "continuous". You can do that with jumper settings on the pcb's of the Eela Audio S120, SBM90 of SRM mixing desks and in software with the D3.

Parallel (LPT) port layout for remote control

Two Fader Start + two CUE

Pin Signal

10	Fader start A (+)
22	(GND)Fader start A (-)
13	Fader start B (+)
25	(GND)Fader start B (-)
12	CUE A (+)
24	(GND)CUE A (-)
15	CUE B (+)
18	(GND)CUE B (-)

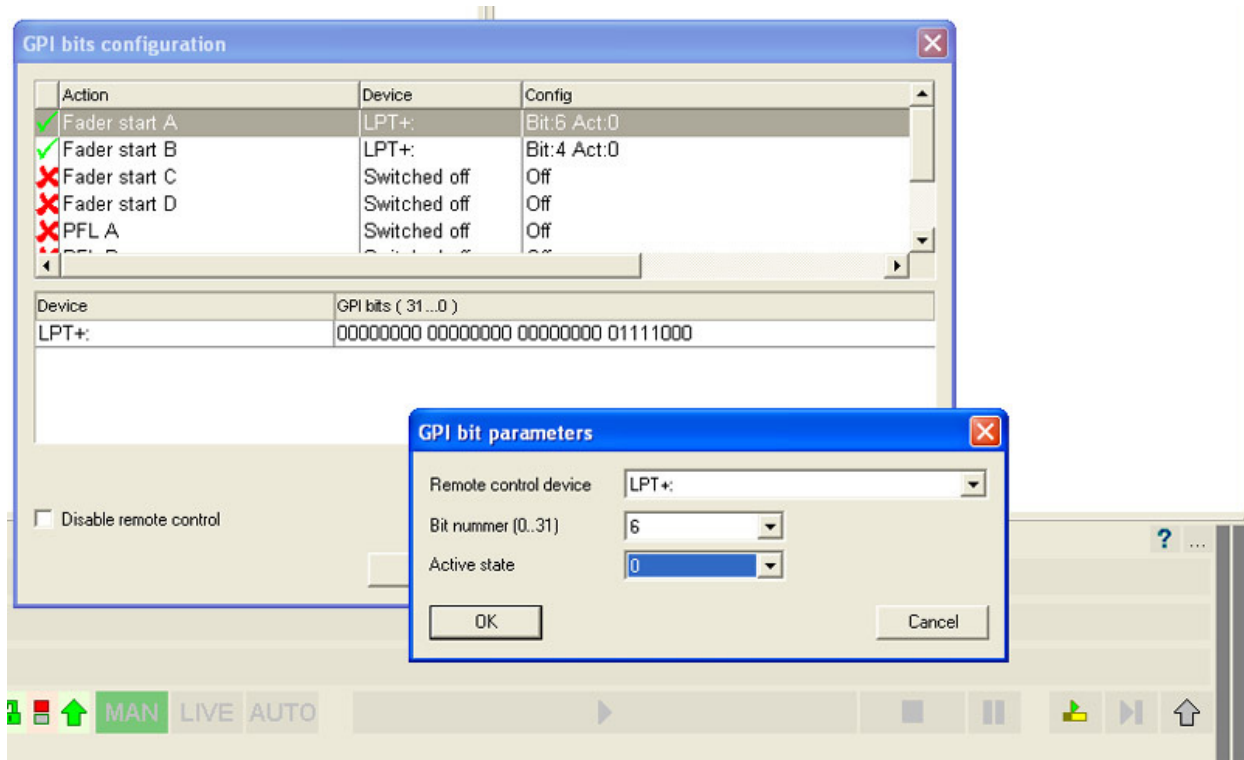
Four Fader Start

PinSignal

10	Fader start 1 (+)
22	(GND)Fader start 1 (-)
13	Fader start 2 (+)
25	(GND)Fader start 2 (-)
12	Fader start 3 (+)
24	(GND)Fader start 3 (-)
15	Fader start 4 (+)
18	(GND)Fader start 4 (-)

Within the CAPS2 software you can select the faderstart by clicking on the "playback" configuration button (the one with ...) on the right hand bottom of the screen. Select 'Remote control setup', and a window like in the picture will open.

Eela CAPS2 faderstart



If correctly connected you can see a change in a bit value in the line 'Device' / 'LPT+'. Beginning from the right count the bit number starting with "0" the bit that changes.

Double-click 'Fader start A' line (or B, C of D) and a window 'GPI bit parameter' will open.

Select 'Remote control device' on LPT+

Select the required bit number

'Active state' is standard '0', however if you are using a fader contact that is closed in case the fader is closed you can change this.

Close the window with the 'OK' button.