

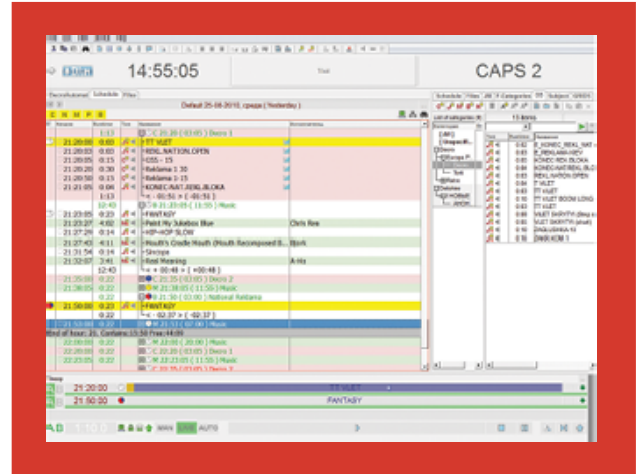
CAPS 2

Caps 2 DJin in Universal Box

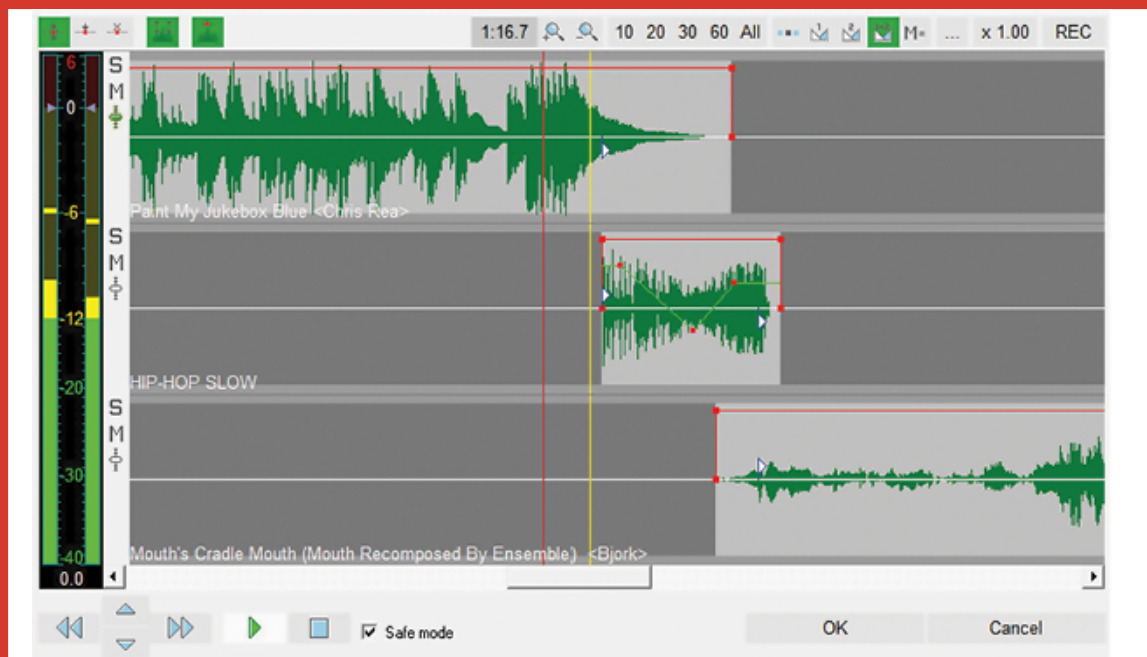
Broadcasting, Panning, Editing, supporting automated delivery of the program on-air

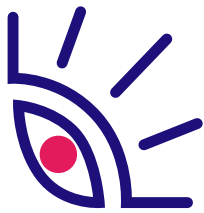
Caps 2 DJin provides various level of automated delivery of the program on-air according to a schedule. It provides also permanent monitoring of the broadcasted signal and settling occurring conflicts. Embedded hot reserve system ensures fail-safe operation of the system.

Caps 2 DJin GUI (graphic user interface) can be easily configured for the customer's individual needs; the most flexible result is when using two monitors setup (e.g. left monitor with the schedule and multi-channel X-player, right monitor with DB and file browsers, Jingle-Machine etc).



Thanks to multiple possible configurations, Caps 2 DJin supports broadcasting with various level of automation from fully-automated delivery to live program. Various means of remote control help integrating the system in a wide range of hardware equipment.



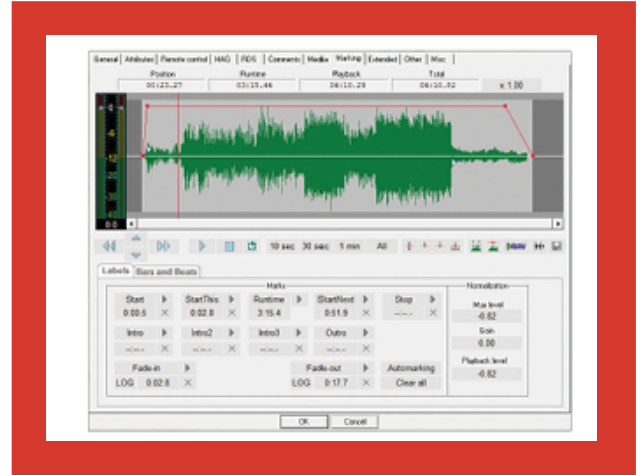


CAPS 2

Caps 2 DJin features configurable administration system providing access to various functions only to authorized trustworthy users. Thus the whole system including on-air schedule is secured from illegal access.

Text + Audio

Caps 2 DJin handles text, not only audio. Special compilations of text+audio are provided with exact allocation of audio items within the text read by moderator. Crossfade editing, voice tracking and voice over are supported.



Caps 2 BCS Editor provides non-destructive multitrack audio editing of audio files, DB or schedule audio elements.

On-air schedule can be edited instantly from every working place of the system.

Embedded system of resolving conflicts provides automatic filling of gaps within the program. There are two separate algorithms for filling in of short and long gaps. It eliminates occasional overlaying of one audio item over another.

EA Broadcast / EELA Audio
Het Riet 8 A
5431NM Cuijk
The Netherlands

tel.: +31 485 331182
fax.: +31 485 315505
e-mail: info@eela-audio.com

Local Dealer

System requirements:

CAPS 2 system is working on Microsoft Windows 7 (NTFS file system) on Intel-compatible personal computers. The system requirements are as follows;

RAM: optimal requirements of operating system + 256 Mb

HDD: 50 MB minimum for installation and start of work;

Processor: depends upon exact application. Minimal requirements are the same as for operating system;

Local network interface 100 Mbit/s minimum

USB ports;

Keyboard and mouse

VGA screen resolution minimum 1024x768

Availability of one Microsoft SQL Server 2008 for big installations

Type of audio card is determined due to the target of the workstation

The most important factor is the reliability of the hardware platform and correctly configured operating system. Failure of the on-air computer leads to many troubles which could be avoided by using of reliable hardware platform and hot reserve on-air machine which will take over the failed one without any interruption of the broadcasted program.